

LAKER



Alpine Chair

Product Data Sheet

Alpine Chair

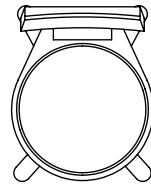
Description

The Alpine chair is inspired by the folk chairs of the Tyrol region. A modern interpretation of an archetypal object, Alpine is an interplay between reference and naïveté. Manufactured from solid timber and designed for stability and comfort, Alpine is equally functional as a dining chair or a side chair.

Design : David Caon & Henry Wilson 2021

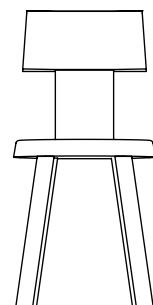
Dimensions

Width	36cm		14.2"
Depth	45cm		17.7"
Height	79.5cm		29.9"
Seat	46cm		18.1"

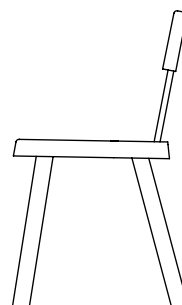


36

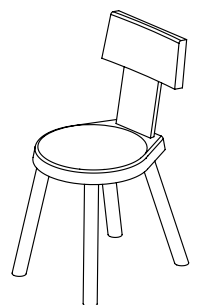
45



46



79.5



Construction

All components are machined from solid timber and glue-fixed together with traditional mortice and tenon construction method. Removable screw-fix felt glides are fixed to the base of the legs for use on hard surfaces. May be removed by customer for use on carpet and other soft floors.

Country of Origin

Australia

Production Lead Time

If not in stock, production lead time is 4-6 weeks ex Factory

Warranty

5 year repair warranty on all solid timber seating products. Please contact the Laker team for additional information regarding warranty

Materials

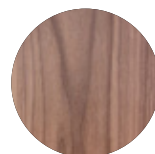
FSC approved Solid Oak
FSC approved Solid Walnut

Colour and Finish

Current colours are natural solid timber finishes sealed in Osmo Polyx-Oil sealant at 10% Gloss. Custom finishes may be possible upon request and are subject to a minimum order quantity.



Solid Oak
LKR-ALP-OA



Solid Walnut
LKR-ALP-WA

LAKER



Alpine Chair

Product Data Sheet

LAKER

For enquiries, please visit us at

www.laker.studio
info@laker.studio
laker.studio

©Laker 2022. All rights reserved.