

LAKER

Product Data Sheet —

Lug



DESCRIPTION

A door stop. Lug has been designed to ensconce the blade edge of the door in an embrace, holding it firmly in place with its prodigious weight whilst minimising its impact on the path of travel.

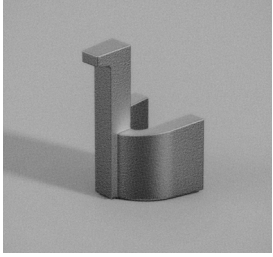
The result of a brutally industrial process, Lug is cast in iron and then zinc plated to prevent corrosion. A die-cut felt pad is supplied for use on delicate floor surfaces (such as wooden floorboards or painted floors)

Imperfections in the surfaces caused by the manufacturing process are to be expected and inherent in the visual language of this object. No two are exactly alike. Suitable for doors up to 55 mm wide

Design: David Caon & Henry Wilson 2021

LUG, ZINC PLATED CAST IRON.
LKR-LUG-Z

DIMENSIONS	100W X 98D X 150H MM
MATERIAL	ZINC PLATED CAST IRON
WEIGHT	2.2 KG
COUNTRY OF ORIGIN	AUSTRALIA
LEAD TIME	4-6 WEEKS
WARRANTY	5 YEARS

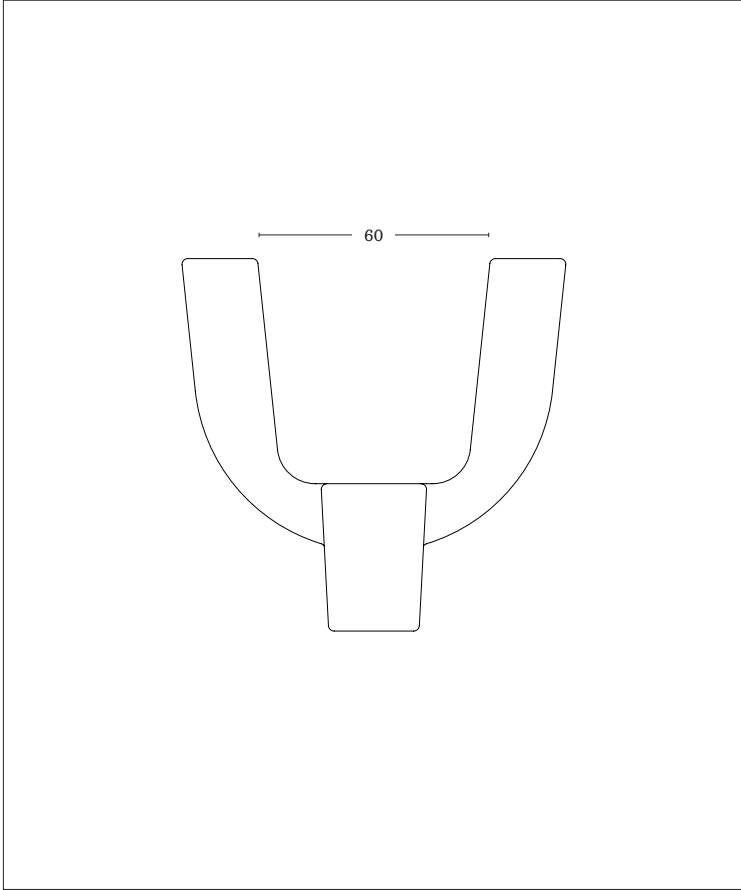


FINISHES

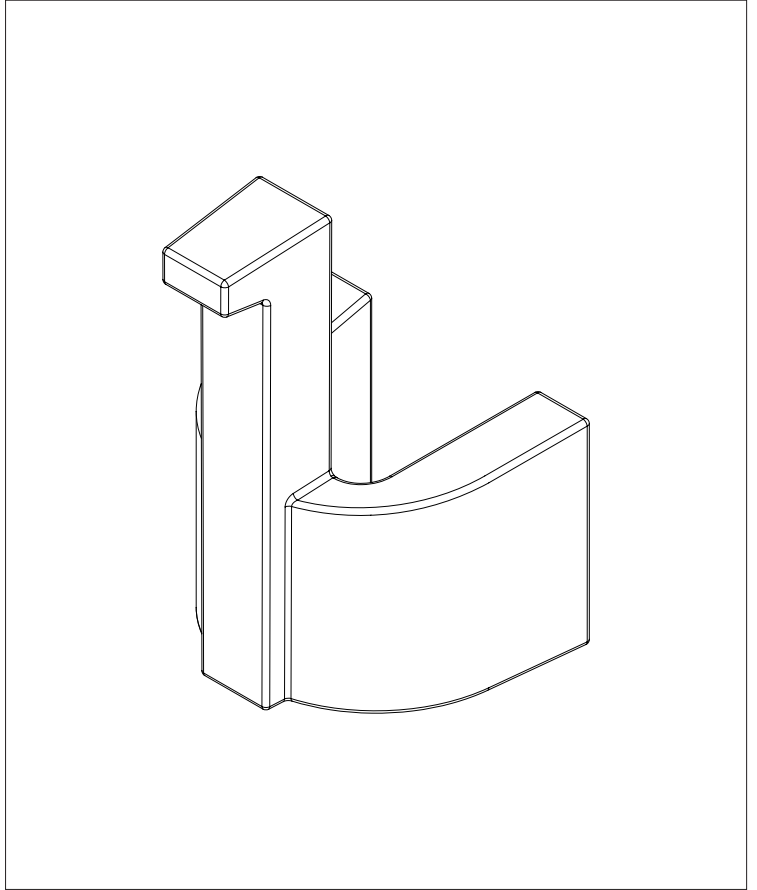


ZINC PLATED CAST IRON

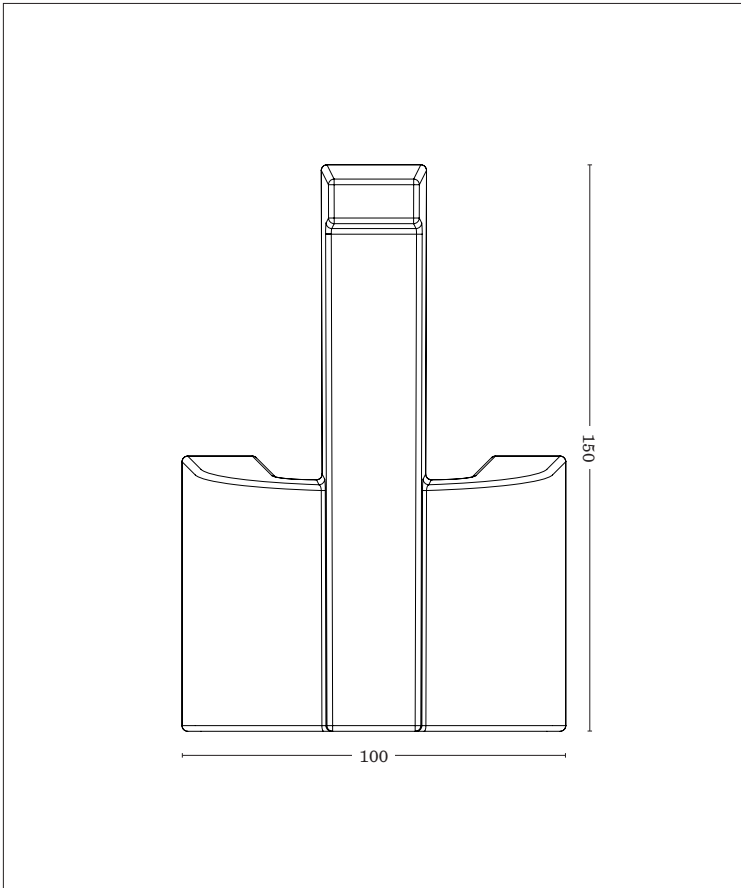
TOP VIEW



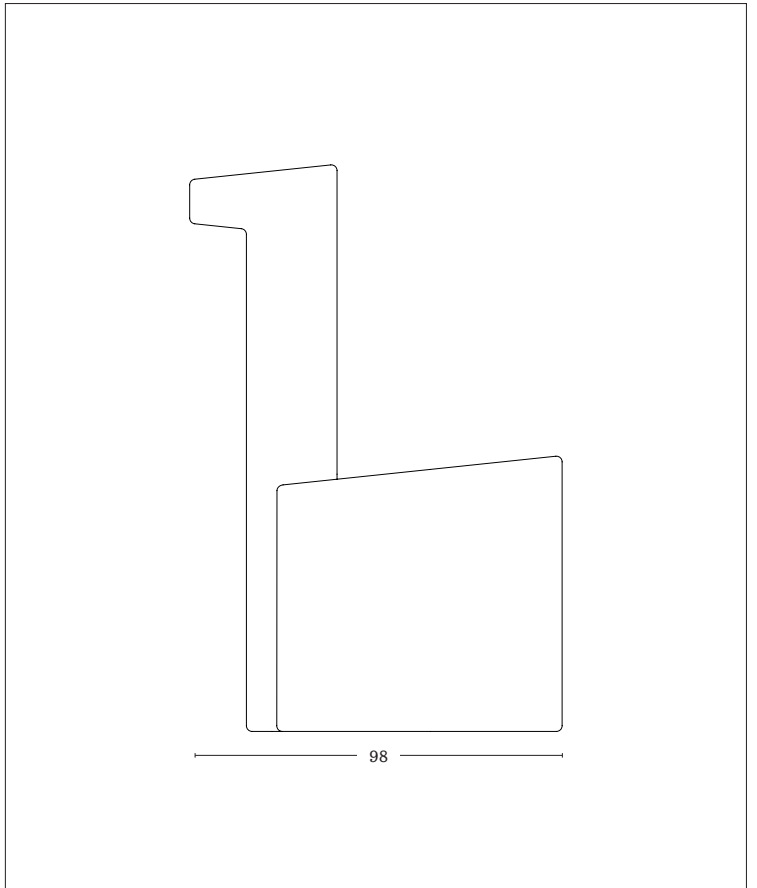
ISOMETRIC VIEW



FRONT VIEW



SIDE VIEW



(E. info@laker.studio)
(P. (02) 9199 9658)
(A. 3/82 Myrtle Street, Chippendale NSW 2008)